

Solve the puzzles!

## CREATURES OF FAITH

Try to answer the six questions on this worksheet.

You can find the numbers for the answers to each question on the back of the question sheet.

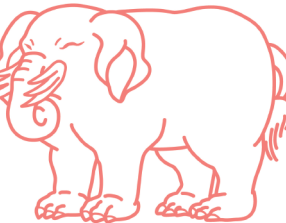


1. From "Buddhas and Various Creatures"

What animal is Daiitoku Myōō, Defeater of Death, riding?



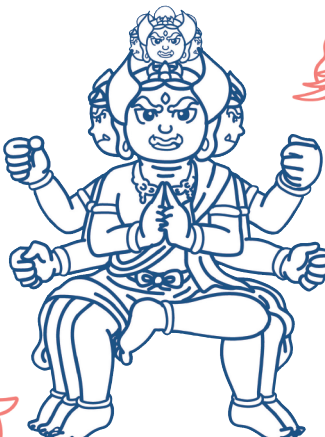
①Shishi



②Elephant



③Water Buffalo



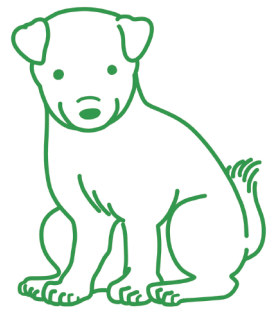
Daiitoku Myōō



④Deer

2. From "Twelve Zodiac Animals and Constellations"

On the head of one of the Twelve Standing Guardian Deities (No. 34), there is an animal that sits with both knees up. Which is it?



①Dog



②Monkey



③Rat



④Rabbit



3. From "Lamenting Creatures"

Many animals and creatures appear in the painting of Buddha's Passing into Nirvana (No. 42). Which one is absent?



①Elephant



③Dragon



Haniwanko the Dog



②Chicken



④Japanese giant salamander

On the back see if you can draw a picture with a pencil of a creature you liked that you saw in the exhibition hall.



A creature is hiding in the Flaming Jewel Shaped Reliquary (No. 51). Which animal is it?



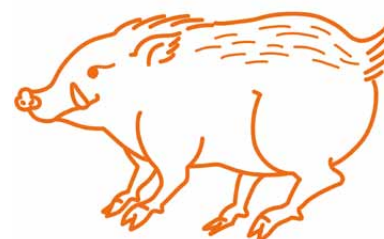
① Shishi



## ② Snake



③Fox



④Wild boar



## Kujappi the Peacock

Which of the following combinations fits the faces of the Shishi Lion and Komainu Dog (No. 55)?

Pay attention to the horns and mouths.



①



②

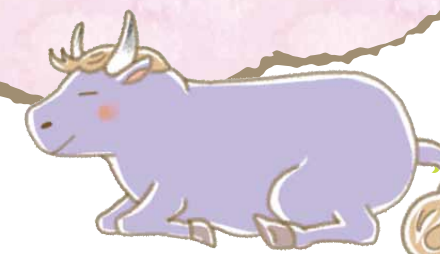


③



④

Which creature is crouching on the top of the head of the Bugaku mask Ryōō? (No. 59)



Gyūtarō the Water Buffalo



①Cat



②Tiger



### ③Dragon



④Horse

## Answer column

Was it fun to look for the answers?

Were the questions hard?



1	2	3
4	5	6